

# 10X5FT



Pack Size (L x W x H)  
11 x 18.8 x 62"

## E2 10X5FT CANOPY TENT

Equip your commercial-grade Ecotent with your option of tent fabrics and customization options. Your Ecotent Product Expert can assist with any questions, pricing, and product support.

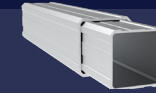
### QUICK LINKS:

- [Ecotent Website](#)
- [Tent Sizes](#)
- [Technical Details](#)

- [3D Tent Configurator](#)
- [Photo Gallery](#)
- [Warranties & Certificates](#)

### TECHNICAL DETAILS

**E2**



#### Frame Construction

Frame Material	Aluminum
Leg Shape	Ribbed Square
Leg Profile	43x55.5mm (2.5mm)
Truss Profile	28.5x15mm (2mm)
Connecting Elements	Fiber Reinforced Nylon
Footplate Material	Anodized Aluminum
Push-Button Locks	✓ Comfort Press
Corner Brackets	✗

#### Weight

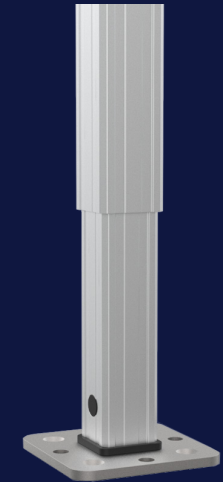
44.2lbs (20.1kg)

#### Transport Bag

✓ Heavy-Duty PVC

#### Frame Height Extensions

✓ Up to 12"



### E2 TEXTILE OPTIONS

Oxford 500D, Oxford 250D, Oxford 250D NFR\* & Recycled Fabric NFR\*

\*NFR: Non-Fire Rated. All fabrics are certified fire-retardant unless labeled as NFR.

### TEXTILE PROPERTIES

	OXFORD 500D	OXFORD 250D
<b>Waterproof Rating</b> (DIN EN 20811)	✓ 2x Industry Avg. 2,000mm	✓ 1.5x Industry Avg. 1,600mm
<b>Fire Certifications</b> B - s1, d0 (difficult to ignite)	NFPA 701, CPAI-84 Sec.6, EN 13501-1:2019, CAN/ULC-S109, CA Title 19 Sec. 1237	
<b>Color Fade Resistance</b> (DIN EN ISO 105-B02)	Durable blue scale: 4.5-6.5 of 8	Durable blue scale: 4.5-6.5 of 8
<b>Printing Options</b>	✓ Thermal & Full	✓ Thermal & Full

### FABRIC COLORS

